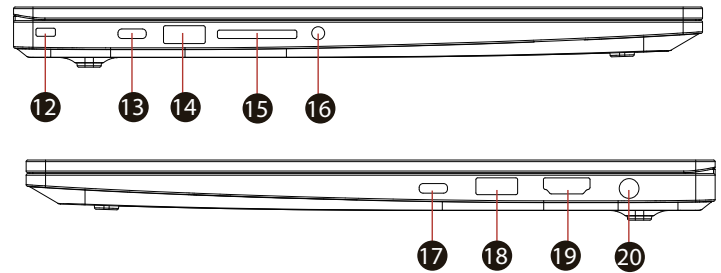
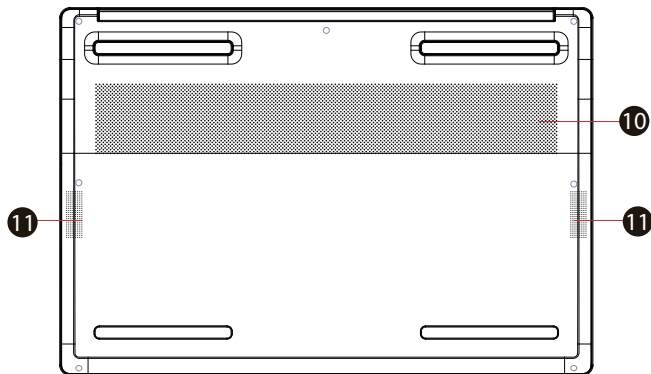


- 1- Camera Status LED
- 2- Camera
Infrared Capability For Facial Recognition Camera
- 3- Microphone
- 4- LCD Screen
- 5- Power Button&LED
- 6- Keyboard
- 7- Caps Lock Status LED
- 8- Touchpad LED Indicator / Touchpad Switch
- 9- Touchpad / Click pad

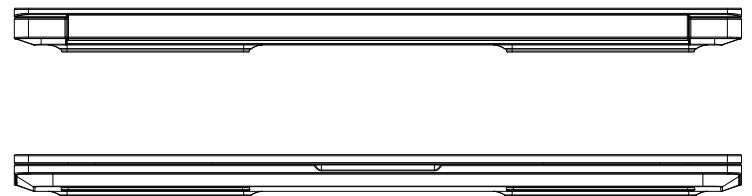
*Click twice left corner will open or close (White light) touchpad functionality



- 12- Kensington® Lock Port
- 13- USB Type C Port
- 14- USB Port
- 15- Card Reader
- 16- Audio Combo
- 17- Thunderbolt™4 (USB Type C 3.1)
- 18- USB Port
- 19- HDMI port
- 20- Power Connector

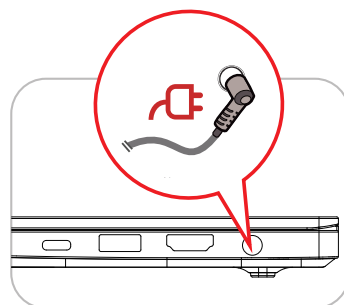
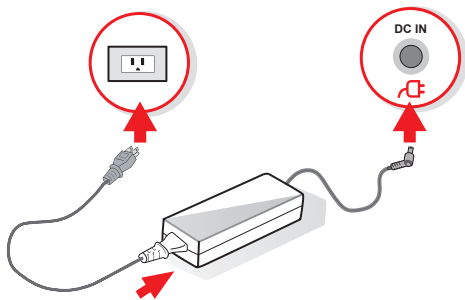


- 10- Vents
- 11- Speaker



Starting

* Please note: The AC adapter included with your PC was specifically designed and approved for your model. Utilization of an after-market may damage either the notebook or other devices connected to it. If damage is determined to have been caused by utilization of an unauthorized power supply, it will not be protected under warranty.



SAFETY INSTRUCTION (BASIC SAFETY RULES)



- 1** Do not apply heavy pressure to the computer or subject it to any form of strong impact as this can damage the computer's components or otherwise cause it to malfunction.
- 2** Never cover or block the air vents including those located at the base of the computer. Never cover your computer or AC adapter with any object.
- 3** To keep your computer in prime operating condition, protect your work area from direct sunlight.
- 4** Do NOT expose to or use near liquid, rain, or moisture.
Do NOT use the modem during electrical storms.
- 5** Do not use or expose this device around magnetic fields as magnetic interference may affect the performance of the device.